

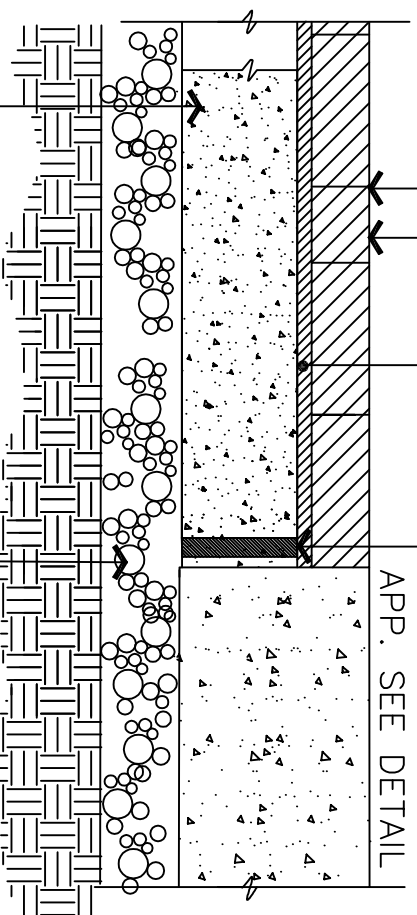
SWEEP JOINTS W/ POLYMERIC SAND – TECHNI SEAL OR EQUAL

BRICK PAVER / PERPENDICULAR HERRINGBONE

1" MAX COMPACTED SAND MORTAR ODOT 703.02 (ASTM C-33)  
SETTING BED

FRAMING PIN WEEP HOLES  
NOT TO EXCEED 4' O.C.

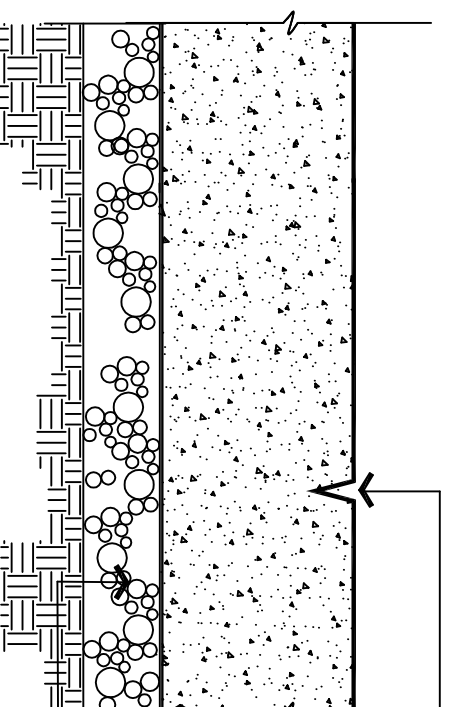
CONCRETE CROSSWALK  
APP. SEE DETAIL



6" CONCRETE BASE      6" AGG. BASE, ODOT ITEM #304

NOTE: NO FOUNDRY SAND OR SLAG IS PERMITTED IN AGGREGATE BASE (304).

### CROSSWALK DETAIL



TYPICAL TOOLED AND CUT CONTROL JOINT 1/4 DEPTH OF SLAB – SPACING OF JOINTS TO BE 4' O.C.  
ALIGN CONCRETE CROSSWALK AND CONCRETE WALK JOINTS.

EXPANSION JOINTS – 1/2" CLOSED CELL EXPANSION JOINT FILLER TO BE SEALTIGHT CERAMAR OR EQUAL – 60FT O.C. TYPICAL. SEAL EXPANSION JOINTS WITH POLYURETHANE ELASTOMERIC SEALANT TYP. TREMCO THC 900/901 OR EQUAL.

10" ITEM 452 PLAIN PORTLAND CEMENT CLASS C (LIMESTONE)  
CONCRETE PAVEMENT

COMPACTED AGGREGATE BASE  
ODOT ITEM 304, 6" TYP.

4X8 BRICK PAVER, 2 3/4" THICK – ROADWAY PAVER BY BELDEN BRICK – ASTM C1272 TRAFFIC TYPE F APPL. PX WEATHER SX – 10,000 PSI – COLOR JUMBO REGIMENTAL

BRICK ALTERNATE – WHITACRE GREER 4 X 8-1/2 X 3-1/2 WEATHER CLASS SX, TRAFFIC F, APPLICATION PX – COLOR 33 DARK ANTIQUE – 10,000 PSI ASTM C1272  
BRICK TO HAVE BEVELED EDGE AND LUGS.

USE PERPENDICULAR HERRINGBONE PATTERN IN INTERSECTION.

SWEEP JOINTS WITH DRY MIXTURE OF POLYMERIC SAND Techni-Seal OR APPROVED EQUAL. USE PLATE TAMPER WITH RUBBER MAT OR OTHER PROTECTION FOR BRICK. REMOVE EXCESS AND MOISTEN TO SET JOINT SEALANT SAND.

1" MAX COMPACTED CONCRETE SAND ODOT 703.02 (ASTM C 33) SETTING BED W/ MORTAR.

USE INTERIOR FORMING PINS FOR WEEP HOLES ON DOWNSLOPE SIDES AND INTERIOR CORNERS.  
MAX 4 FT. CENTERS. – COVER W/ FILTER FABRIC.

CONCRETE CROSSWALK AND PAVER BASE IS TO BE CLASS "C" ODOT 499.03 – HIGH EARLY. NO EXPANSION JOINTS ARE TO BE PLACED AGAINST BRICK PAVER SECTIONS.

MAX 1/4" SPACE BETWEEN BRICK AND CONCRETE.  
PROVIDE 1/4" RADIUS ON ALL SLAB EDGES.

ODOT REFERENCES ARE FROM THE CURRENT ODOT CONSTRUCTION AND MATERIAL SPECIFICATIONS. ANY DISCREPANCIES SHALL BE SUBJECT TO THE CITY ENGINEER'S DISCRETION.

ALL CONCRETE CONSTRUCTION TO CONFORM TO CURRENT CITY OF CANTON SPECIFICATIONS FOR CONSTRUCTION, REPAIR AND REPLACEMENT OF SIDEWALKS, CURBS AND DRIVEWAYS.



OFFICE OF THE CITY ENGINEER  
**CANTON, OHIO**  
DANIEL J. MOEGLIN, P.E., CITY ENGINEER  
2436 30th St. NE 44705 330-489-3381 www.cantonohio.gov/engineering

APPROVED DATE: FEB. 2012

APPROVED BY: JTD

DRAWING FILE NAME:  
ce\_40-47\_STREETSCAPE.dwg

#### REVISIONS

DESCRIPTION	DATE	BY
REVISED JOINT NOTES	2/26/2019	RMB

**STANDARD DRAWING NO. 41**  
ROADWAY BRICK &  
CROSSWALK PAVEMENT  
DETAILS  
SHEET 1 OF 1