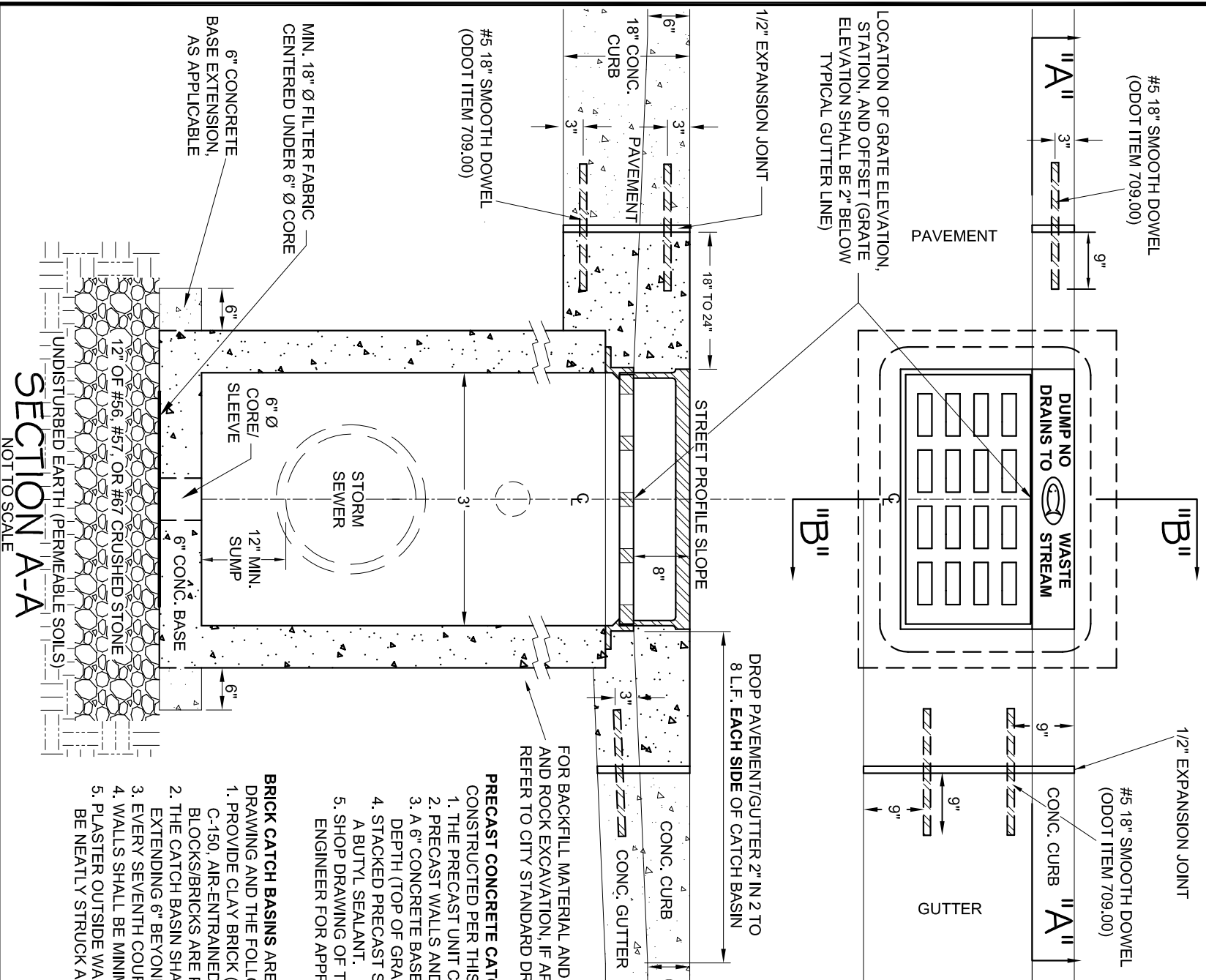


# PLAN VIEW

NOT TO SCALE

## STAND-UP CONCRETE CURB SECTION

## CONCRETE CURB & GUTTER SECTION



## SECTION A-A

NOT TO SCALE

## SECTION B-B

NOT TO SCALE

### NOTES:

1. THESE STRUCTURES ARE ONLY TO BE USED AS DIRECTED BY THE CITY ENGINEER TO ASSIST IN PROVIDING POST-CONSTRUCTION STORM WATER QUALITY TREATMENT IN ACCORDANCE WITH APPLICABLE NPDES PERMIT REQUIREMENTS. THEY ARE BEST UTILIZED AS SUPPLEMENTAL POST-CONSTRUCTION STORM WATER QUALITY TREATMENT TO PROMOTE GROUND INFILTRATION, THE CAPTURE OF LARGER DEBRIS, AND THE OVERALL REDUCTION OF RUNOFF AND POLLUTANTS THROUGH THE STORM SEWER SYSTEM. THESE STRUCTURES SHOULD ONLY BE USED WHEN UNDERLYING SOILS ARE KNOWN TO HAVE MODERATELY RAPID PERMEABILITY OR BETTER.
2. ALL WORK SHALL CONFORM TO ODOT ITEM 604 EXCEPT AS OTHERWISE NOTED HEREIN.
3. A 12" MINIMUM SUMP SHALL BE PROVIDED BELOW THE LOWEST STORM SEWER INVERT AND THE BOTTOM OF THE CATCH BASIN.
4. A 6" DIAMETER CORE OR SLEEVE SHALL BE CENTERED IN THE BASE OF THE CATCH BASIN.
5. A MINIMUM 18" DIAMETER PIECE OF FILTER FABRIC (ODOT 712.09 TYPE A, B, C, OR D) SHALL BE PLACED UNDER THE BASE OF THE CATCH BASIN BELOW THE 6" CORE/SLEEVE.
6. THE CATCH BASIN SHALL SIT ON A 12"-THICK LAYER OF #56, #57, OR #67 CRUSHED STONE.
7. PRECAST CONCRETE OR BRICK CATCH BASINS ARE ALLOWED AS NOTED HEREIN.
8. ALL CONCRETE SHALL CONFORM TO ODOT ITEM 499 CLASS C (4000 psi).
9. WHEN STREET PROFILE SLOPE IS 5% OR STEEPER, CONSTRUCT CATCH BASIN IN ACCORDANCE WITH CITY STD. DWG. NO. 3.
10. THE EXCAVATED AREA AROUND THE CATCH BASIN SHALL BE BACKFILLED WITH ODOT ITEM 703.11, TYPE 1 (304, 411, OR 617) COMPACTED IN 8" LIFTS OR ODOT ITEM 613. NO FOUNDRY SAND OR SLAG PERMITTED.
11. EXPANSION JOINT MATERIAL SHALL CONFORM TO ODOT ITEM 705.03. 1" OF JOINT SEALER (705.04) SHALL BE PLACED OVER EXPANSION JOINTS.
12. CASTINGS SHALL BE EAST JORDAN 7030 CURB INLET WITH TYPE T1 BACK AND TYPE M6 VANE GRATE. NENNAH R-3067-L, OR EQUAL APPROVED BY CITY ENGINEER (GRATE USED SHALL NOT BE SPECIFICALLY IDENTIFIED BY MANUFACTURER AS NOT SUITABLE FOR BICYCLE TRAFFIC). THE CASTING BACK (HOOD) MUST INCLUDE "ECO-SENSITIVE" MARKINGS SUCH AS: "DUMP NO WASTE: DRAINS TO STREAM" AND AN AQUATIC LIFE LOGO. THE LETTERING AND LOGO SHALL BE RAISED OR RECESSED AND INTEGRAL WITH THE CASTING OF THE BACK. ALTERNATE NOTATION OR LOGO IS SUBJECT TO THE CITY ENGINEER'S APPROVAL. CASTINGS TO BE GRAY IRON IN COMPLIANCE WITH ASTM A-48 CLASS 35 AND AASHTO M306.
13. ALL OPENINGS AND KNOCKOUTS FOR INLET AND OUTLET PIPING SHALL BE FASHIONED NEATLY. ALL ANNULAR SPACE SHALL BE FILLED WITH CEMENT GROUT, BRICK AND MORTAR, OR CLASS 'C' CONCRETE.
14. ONE 4" DIAMETER INLET PIPE SHALL BE INSTALLED ON THE SIDE OF THE CATCH BASIN OPPOSITE THE STREET (AS SHOWN).
15. KNOCK-OUT PANELS ARE NOT ALLOWED UNLESS PRE-APPROVED BY THE CITY ENGINEER.
16. ODOT REFERENCES ARE FROM THE CURRENT ODOT CONSTRUCTION AND MATERIAL SPECIFICATIONS. ANY DISCREPANCIES SHALL BE SUBJECT TO THE CITY ENGINEER'S DISCRETION.

FOR BACKFILL MATERIAL AND COMPACTION, AND ROCK EXCAVATION, IF APPLICABLE, REFER TO CITY STANDARD DRAWING NO. 19

**PRECAST CONCRETE CATCH BASINS** ARE ACCEPTABLE AND SHALL BE CONSTRUCTED PER THIS DRAWING AND THE FOLLOWING SPECIFICATIONS:

1. THE PRECAST UNIT CONFORMS TO ODOT ITEM 706.13.
2. PRECAST WALLS AND BOTTOM SHALL HAVE A MINIMUM THICKNESS OF 6".
3. A 6" CONCRETE BASE EXTENSION IS REQUIRED ON ALL FOUR SIDES WHEN DEPTH (TOP OF GRATE TO LOWEST PIPE INVERT) EXCEEDS 6 FEET.
4. STACKED PRECAST SECTIONS MUST HAVE A TONGUE/ GROOVE JOINT AND A BUTYL SEALANT.
5. SHOP DRAWING OF THE PRECAST UNIT SHALL BE SUBMITTED TO THE CITY ENGINEER FOR APPROVAL.

**BRICK CATCH BASINS** ARE ACCEPTABLE AND SHALL BE CONSTRUCTED PER THIS DRAWING AND THE FOLLOWING SPECIFICATIONS:

1. PROVIDE CLAY BRICK (ASTM C-32-93) WALLS WITH FULL MORTAR (ASTM C-91 & C-150, AIR-ENTRAINED PORTLAND CEMENT) JOINTS. CONCRETE & CEMENT BLOCKS/BRICKS ARE PROHIBITED FOR NEW OR RECONSTRUCTED BASINS.
2. THE CATCH BASIN SHALL HAVE A CONCRETE BASE (MINIMUM 6" THICKNESS) EXTENDING 6" BEYOND OUTSIDE OF FOUR WALLS OF CATCH BASIN.
3. EVERY SEVENTH COURSE MUST BE A STRETCHER COURSE.
4. WALLS SHALL BE MINIMUM 8" THICK.
5. PLASTER OUTSIDE WALLS WITH 1/2" NON-SHRINK MORTAR; INSIDE JOINTS MUST BE NEATLY STRUCK AND CLOSED.

(PRECAST CONCRETE CATCH BASIN SHOWN)

APPROVED DATE: MAR. 2012

APPROVED BY: CDB, RMB, SLH

DRAWING FILE NAME: ce\_02.dwg

### REVISIONS

DESCRIPTION	DATE	BY
DRAWING NAME CHANGE	8/16/2017	RMB

## STANDARD DRAWING NO. 2

## CURB INLET INFILTRATION CATCH BASIN

