



THE CITY OF  
**CANTON**  
WILLIAM J. HEALY II, MAYOR

ENGINEERING DEPARTMENT  
Civil/Traffic/Parking/Signal & Lighting/Sign & Pavement Marking  
Daniel J. Moeglin, P.E., S.I., City Engineer  
2436 30<sup>th</sup> St. NE/Canton OH 44705  
PH 330 - 489-6900 / FAX 330 - 489-3337

September 3, 2013

**ADDENDUM #2**

TO: PROSPECTIVE BIDDERS  
RE: GP1125, 55<sup>th</sup> Street NE Storm Sewer Project

---

Addendum #2 for bid opening scheduled for September 10, 2013.

- Add Plan Page C53 to the original plan set. Page C53 is missing in the original.
- Replace the bidbook Page J-2 with the Page J-2 attached. The original pipe total for 24" and 30" is incorrect. The correct totals are 207' and 1314' respectively. The new bid Page J-2 reflects this correction.
- Replace Plan Pages General Summary C10, Sub-summary C13 and Sub-summary C13A with the attached Pages C10, C13 and C13A respectively. The original General Summary and Sub-summaries show incorrect totals for the 24" and 30" pipe mentioned above.

Please sign this Addendum No. 2 at the bottom of this page as proof of receipt. Attach this addendum to the inside front cover of your submission. The Director reserves the right to accept or disqualify the bid if you do not include this addendum.

Respectfully,

  
Steven L. Henderson  
Construction Manager

\_\_\_\_\_  
BIDDERS AUTHORIZED SIGNATURE      DATE

\_\_\_\_\_  
NAME / TITLE (Printed or Typed)



SHEET	REF	SIDE L / R	202			601	602	603								604								638	603			
			PIPE REMOVED - 24" AND UNDER FT	PIPE REMOVED - OVER 24" FT	CATCH BASIN OR INLET REMOVED EA	ROCK CHANNEL PROTECTION CY	HEADWALL CY	12-INCH STORM SEWER, TYPE B FT.	15-INCH STORM SEWER, TYPE B FT.	18-INCH STORM SEWER, TYPE B FT.	21-INCH STORM SEWER, TYPE B FT.	24-INCH STORM SEWER, TYPE B FT.	30-INCH STORM SEWER, TYPE B FT.	36-INCH STORM SEWER, TYPE B FT.	48-INCH STORM SEWER, TYPE B FT.	CURB INLET CATCH BASIN, CITY STD. NO. 1 EA.	CURB INLET CATCH BASIN, CITY STD. NO. 1, AS PER PLAN EA.	CURB INLET DOUBLE CATCH BASIN, CITY STD. NO. 1-D EA.	CURB INLET DOUBLE CATCH BASIN, CITY STD. NO. 1-D, AS PER PLAN EA.	SQUARE-TOP CATCH BASIN EA.	MANHOLE EA.	STORMWATER QUALITY UNIT, AS PER PLAN EA.	12" - 45° BEND EA.	12" - 90° BEND EA.	48" - 90° BEND EA.	WATERLINE RELOCATION AS PER PLAN FT	SANITARY SEWER LATERAL RELOCATIONS, AS PER PLAN FT	
16	CB1	R													1												30	
16	MH1	R											415							1								30
16	CB2	R											355				1											
17	CB3	R															1											
17	CB3N	L										256																
18	CB4	R															1										30	
18	CB5	R																										
19	CB6	R																										90
20	CB7	R											50				1											
20	MH2	R																										
20	HW1	L		20		4.4	0.76																					
20	CB8	L											10															
20	CB9	R																										
20	CB10	L		25																								
20	CB11	R																										
20	B1	R																										1
20	HW2	R				4.4	1.10																					
21	CB12	L																										
21	CB13	L																										
21	CB14	L											7															
21	CB15	L	85																									
21	CB16	R																										30
SUBTOTAL THIS SHT			85	45	0	9	1.86	359	0	936	310	68	1314	224	61	1	8	2	3	2	2	0	0	0	1	90	120	

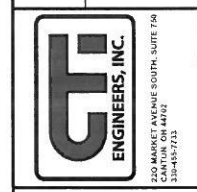
Handwritten red scribbles around the values 310, 290, and 400 in the 603 column of rows 18, 19, and 20 respectively.

Handwritten red scribbles around the values 68 and 1314 in the 603 column of the SUBTOTAL row.

THIS DRAWING IS AN INSTRUMENT OF SERVICE, PREPARED BY GFI ENGINEERS, INC. WHICH SHALL BE REVIEWED BY THE CITY OF CANTON, OHIO, AND COMMON LAW RIGHTS INCLUDING COPYRIGHT AND PATENT RIGHTS SHALL NOT BE SURRENDERED. THIS DRAWING SHALL NOT BE REPRODUCED, COPIED, OR TRANSMITTED IN ANY FORM OR BY ANY MEANS, ELECTRONIC OR MECHANICAL, INCLUDING PHOTOCOPYING, RECORDING, OR BY ANY INFORMATION STORAGE AND RETRIEVAL SYSTEM, WITHOUT THE WRITTEN CONSENT OF GFI ENGINEERS, INC. THE ELECTRICAL SYMBOLS OF THIS DRAWING ARE EXACT REPRESENTATIONS OF THE SEWER, DRAINAGE, AND SANITARY SYSTEMS AS SHOWN ON THE DRAWING. GFI ENGINEERS, INC. SHALL BE RESPONSIBLE FOR THE DESIGN AND CONSTRUCTION OF THE SYSTEMS SHOWN ON THIS DRAWING.

DESIGNED BY	DRAWN BY	CHECKED BY	APPROVED BY
DLK	AJP	DLK	DLK

CITY OF CANTON, OHIO  
55TH STREET NE  
STORM SEWER IMPROVEMENTS  
DRAINAGE SUBSUMMARY



PROJECT NO.	E10025
DATE	8/2013
SCALE	NOT TO SCALE
DRAWING NO.	C13

REF. NO.	ITEM NO.	SHEET NUMBER				N/A	ITEM NO.	GRAND TOTAL	UNIT	DESCRIPTION	SHEET
		6A	12	13A	14						
<b>ROADWAY</b>											
1	201	1					201	1	LUMP SUM	CLEARING AND GRUBBING	
2	202					1	202	1	EACH	STRUCTURE REMOVED (BOX CULVERT AND WINGWALLS)	
3	202			540			202	540	L.F.	PIPE REMOVED - UNDER 24"	
4	202			45			202	45	L.F.	PIPE REMOVED - 24" OR OVER.	
5	202				256		202	256	SY	PAVEMENT REMOVED (CONCRETE DRIVEWAY)	
6	202			5			202	5	EACH	CATCH BASIN OR INLET REMOVED	
7	203		1655				203	1655	C.Y.	EXCAVATION	
8	203		551				203	551	C.Y.	EXCAVATION UNDERCUT SUBGRADE, AS DIRECTED	
9	203		1235				203	1235	C.Y.	EMBANKMENT	
10	203					550	203	550	C.Y.	STONE FOR SUBGRADE REPLACEMENT, AS DIRECTED	
11	204		9802				204	9802	S.Y.	SUBGRADE COMPACTION	
12	204					100	204	100	S.Y.	GEOTEXTILE FOR SUBGRADE STABILIZATION, AS DIRECTED	
13	204					1000	204	1000	S.Y.	GEOGRID FOR SUBGRADE STABILIZATION, AS DIRECTED	
14	613					50	613	50	C.Y.	LOW STRENGTH MORTAR BACKFILL, AS DIRECTED	
<b>EROSION CONTROL</b>											
15	653					200	653	200	C.Y.	TOPSOIL FURNISHED AND PLACED, 3" THICK	
16	659				2191	209	659	2400	SY	SEEDING AND MULCHING	
17	832					1	832	1	LUMP SUM	STORM WATER POLLUTION PREVENTION PLAN	8
18	832					1	832	1	LUMP SUM	EROSION CONTROL	8
<b>DRAINAGE</b>											
19	601			12			601	12	C.Y.	ROCK CHANNEL PROTECTION, TYPE C WITH FILTER FABRIC	
20	602			2			602	2	C.Y.	CONCRETE MASONRY	
21	603	20					603	20	EACH	STORM DRAIN CONNECTION, AS PER PLAN	6A
22	603			593			603	593	FOOT	12 INCH STORM SEWER	
23	603			4			603	4	EACH	12 INCH STORM SEWER 45° BEND	
24	603			1			603	1	EACH	12 INCH STORM SEWER 90° BEND	
25	603			416			603	416	FOOT	15 INCH STORM SEWER	
26	603			2267			603	2267	FOOT	18 INCH STORM SEWER	
27	603			310			603	310	FOOT	21 INCH STORM SEWER	
28	603			207			603	207	FOOT	24 INCH STORM SEWER	
29	603			1314			603	1314	FOOT	30 INCH STORM SEWER	
30	603			224			603	224	FOOT	36 INCH STORM SEWER	
31	603			61			603	61	FOOT	48 INCH STORM SEWER	
32	603			1			603	1	EACH	48 INCH STORM SEWER 90° MITERED ELBOW	
33	603			120			603	120	FOOT	SANITARY SEWER LATERAL RELOCATION, AS PER PLAN	13A
34	604			2			604	2	EACH	STORM MANHOLE	
35	604			5			604	5	EACH	CURB INLET CATCH BASIN, CITY STD. NO. 1	
36	604			14			604	14	EACH	CURB INLET CATCH BASIN, CITY STD. NO. 1, AS PER PLAN	13A
37	604			3			604	3	EACH	DOUBLE CURB INLET CATCH BASIN, CITY STD. NO. 1 DOUBLE	13A
38	604			4			604	4	EACH	DOUBLE CURB INLET CATCH BASIN, CITY STD. NO. 1 DOUBLE, AS PER PLAN	13A

THIS DRAWING IS AN INSTRUMENT OF SERVICE OWNED BY THE CITY OF CANTON, OHIO. IT IS TO BE USED ONLY FOR THE PROJECT AND SITE SPECIFICALLY IDENTIFIED HEREIN. IT IS NOT TO BE REPRODUCED, COPIED, REPRODUCED, OR TRANSMITTED IN ANY FORM OR BY ANY MEANS, ELECTRONIC OR MECHANICAL, INCLUDING PHOTOCOPYING, RECORDING, OR BY ANY INFORMATION STORAGE AND RETRIEVAL SYSTEM, WITHOUT THE WRITTEN PERMISSION OF THE CITY OF CANTON, OHIO. THE CITY OF CANTON, OHIO, SHALL BE RESPONSIBLE FOR THE ACCURACY AND COMPLETENESS OF THE INFORMATION PROVIDED HEREIN. THE CITY OF CANTON, OHIO, SHALL BE RESPONSIBLE FOR THE ACCURACY AND COMPLETENESS OF THE INFORMATION PROVIDED HEREIN. THE CITY OF CANTON, OHIO, SHALL BE RESPONSIBLE FOR THE ACCURACY AND COMPLETENESS OF THE INFORMATION PROVIDED HEREIN.

REVISIONS		DATE	BY	APP'D
NO.	DESCRIPTIONS			

DESIGNED BY  
DLK

DRAWN BY  
AJP

CHECKED BY  
DLK

APPROVED BY  
DLK

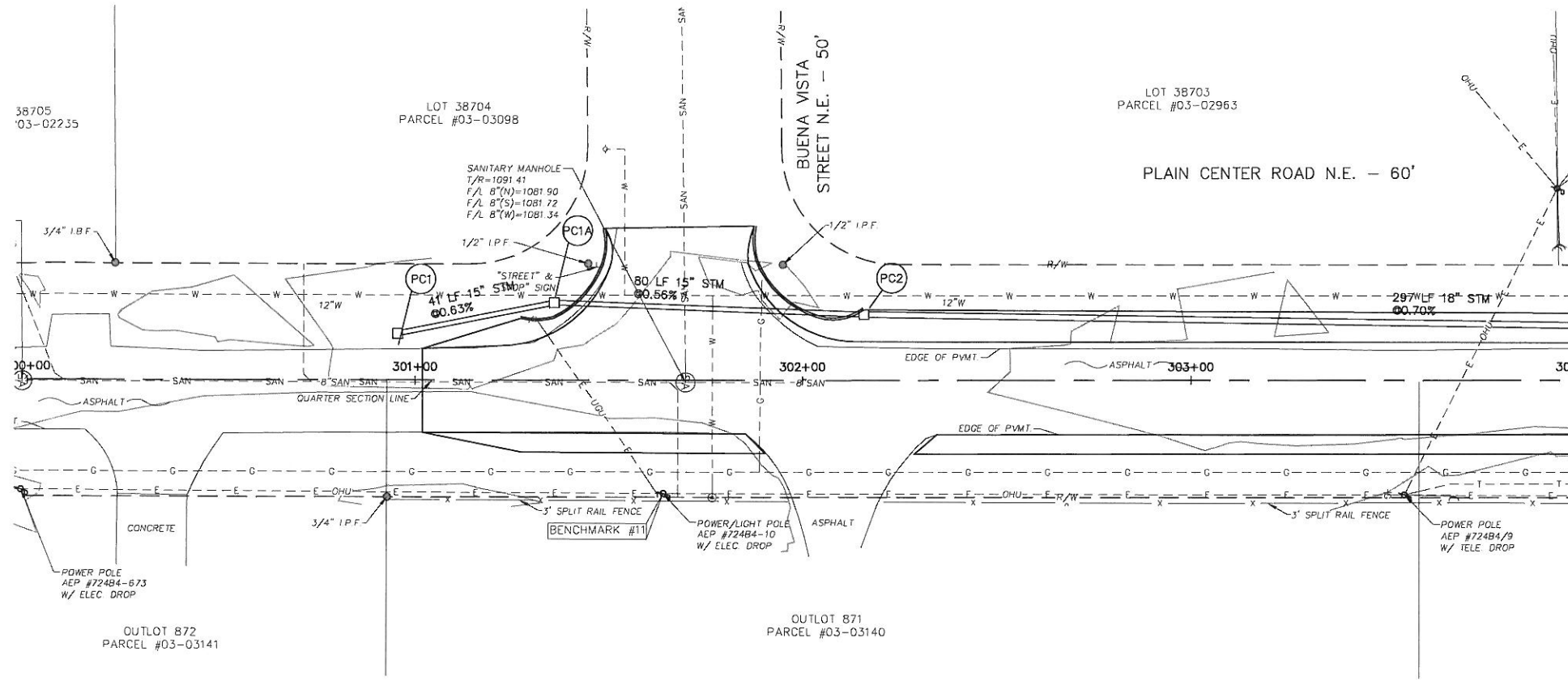
CITY OF CANTON, OHIO  
55TH STREET NE

STORM SEWER IMPROVEMENTS  
GENERAL SUMMARY

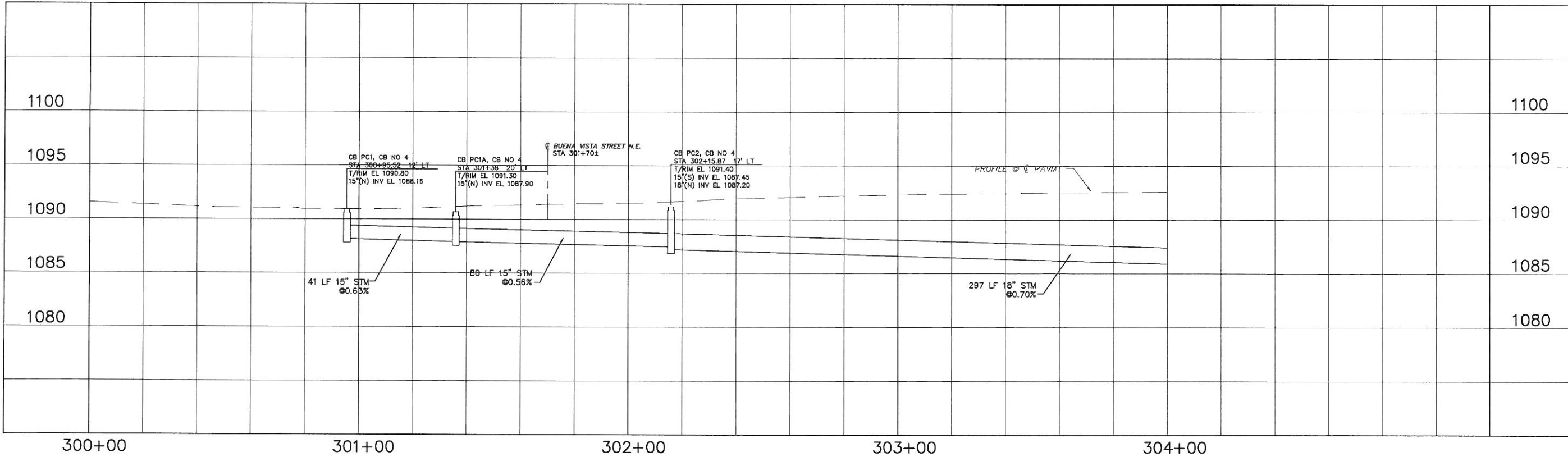


JOB NO. E10025
DATE 8/2013
SCALE
SHEET NO C10

24	603	12 INCH STORM SEWER 90° BEND	1	EACH		
25	603	15 INCH STORM SEWER	416	LF		
26	603	18 INCH STORM SEWER	2267	LF		
27	603	21 INCH STORM SEWER	310	LF		
28	603	24 INCH STORM SEWER	207	LF		
29	603	30 INCH STORM SEWER	1314	LF		
30	603	36 INCH STORM SEWER	224	LF		
31	603	48 INCH STORM SEWER	61	LF		
32	603	48 INCH STORM SEWER 90° MITERED ELBOW	1	EACH		
33	603	SANITARY SEWER LATERAL RELOCATION, AS PER PLAN	120	LF		
34	604	STORM MANHOLE	2	EACH		
35	604	CURB INLET CATCH BASIN, CITY STD. NO. 1	5	EACH		
36	604	CURB INLET CATCH BASIN, CITY STD. NO. 1, AS PER PLAN	14	EACH		
37	604	DOUBLE CURB INLET CATCH BASIN, CITY STD. NO. 1-D	3	EACH		



MATCH LINE  
SEE SHEET C54



THIS DRAWING IS AN INSTRUMENT OF SERVICE OWNED BY CTI ENVIRONMENTAL, INC. WHICH SHALL BE DEEMED THE AUTHOR AND WHICH SHALL REMAIN ALL STATUTORY RIGHTS RESERVED. THIS DRAWING SHALL NOT BE REPRODUCED, COPIED, OR DISTRIBUTED TO OTHERS IN ANY FORM OR USED FOR ANY PURPOSE WITHOUT THE WRITTEN CONSENT OF CTI ENVIRONMENTAL, INC. CTI ENVIRONMENTAL, INC. CANNOT GUARANTEE THAT THIS DRAWING IS COMPLETE OR ACCURATE. IN THE EVENT OF A CONFLICT BETWEEN AN ELECTRONIC COPY AND THE SEALED ORIGINAL, THE SEALED ORIGINAL SHALL GOVERN.

NO	DESCRIPTIONS	DATE	BY

DESIGNED BY	DLK
DRAWN BY	AJP
CHECKED BY	DLK
APPROVED BY	DLK

CITY OF CANTON, OHIO  
 55TH STREET NE  
 STORM SEWER IMPROVEMENTS  
 PLAIN CENTER  
 STA 300+00 TO STA 304+00



JOB NO	E10025
DATE	8/2013
SCALE	AS NOTED
SHEET NO	C53

SHEET	REF	SIDE L/R	202			601	602	603								604								638	603			
			PIPE REMOVED - 24" AND UNDER FT	PIPE REMOVED - OVER 24" FT	CATCH BASIN OR INLET REMOVED EA	ROCK CHANNEL PROTECTION CY	HEADWALL CY	12-INCH STORM SEWER, TYPE B FT	15-INCH STORM SEWER, TYPE B FT	18-INCH STORM SEWER, TYPE B FT	21-INCH STORM SEWER, TYPE B FT	24-INCH STORM SEWER, TYPE B FT	30-INCH STORM SEWER, TYPE B FT	36-INCH STORM SEWER, TYPE B FT	48-INCH STORM SEWER, TYPE B FT	CURB INLET CATCH BASIN, CITY STD. NO. 1 EA	CURB INLET CATCH BASIN, CITY STD. NO. 1, AS PER PLAN EA	CURB INLET DOUBLE CATCH BASIN, CITY STD. NO. 1-D EA	CURB INLET DOUBLE CATCH BASIN, CITY STD. NO. 1-D, AS PER PLAN EA	SQUARE-TOP CATCH BASIN EA	MANHOLE EA	STORMWATER QUALITY UNIT, APP EA	12' - 45° BEND EA	12' - 90° BEND EA	48' - 90° BEND EA	WATERLINE RELOCATION AS PER PLAN FT	SANITARY SEWER LATERAL RELOCATIONS, AS PER PLAN FT	
22	CB17	R					36								1													
22	CB18	L	215		2					215						1												
23	CB19	L								80						1												
23	CB20	R					81										1											
23	CB21	L	27		1										1										30			
23	CB22	R	22												1													
23	HW3	R				3.3	0.46																					
23	CB23	L	191		2					191					1													
51	B1	R						33							1													
51	B2	L								98																		
51	B3	L														1												
51	B4	R														1												
51	B5	R														1												
53	PC1	L								127								1										
53	PC2	L																1										
54	PC3	L						72		10								1				3						
54	PC4	L						12										1			1	1	1		55			
54	PC5	L											90					1										
SUBTOTAL THIS SHT			455	0	5	3	0.46	234	416	1331	0	139	0	0	0	4	6	1	1	5	0	1	4	1	0	85	0	
TOTALS TO GEN SUM			540	45	5	12	2	593	416	2267	310	207	1314	224	61	5	14	3	4	7	2	1	4	1	1	175	120	

207    1314    224

THIS DRAWING IS AN INSTRUMENT OF SERVICE. OWNERS, CONTRACTORS, ENGINEERS, ARCHITECTS, AND CONSULTANTS SHALL BE RESPONSIBLE FOR THE ACCURACY AND COMPLETENESS OF THE INFORMATION, DATA, AND MATERIALS PROVIDED TO THEM FOR THE PREPARATION OF THIS DRAWING. THE CONSULTANT SHALL BE RESPONSIBLE FOR THE ACCURACY AND COMPLETENESS OF THE INFORMATION, DATA, AND MATERIALS PROVIDED TO THEM FOR THE PREPARATION OF THIS DRAWING. THE CONSULTANT SHALL BE RESPONSIBLE FOR THE ACCURACY AND COMPLETENESS OF THE INFORMATION, DATA, AND MATERIALS PROVIDED TO THEM FOR THE PREPARATION OF THIS DRAWING. THE CONSULTANT SHALL BE RESPONSIBLE FOR THE ACCURACY AND COMPLETENESS OF THE INFORMATION, DATA, AND MATERIALS PROVIDED TO THEM FOR THE PREPARATION OF THIS DRAWING.

REV	NO.	DESCRIPTION	DATE	BY	APP'D

DESIGNED BY DLK	CHECKED BY AJP	DATE 
DRAWN BY DLK	APPROVED BY DLK	

CITY OF CANTON, OHIO  
55TH STREET NE  
STORM SEWER IMPROVEMENTS  
DRAINAGE SUBSUMMARY



PROJECT NO.  
**E10025**  
DATE  
**8/2013**  
SCALE  
**NOT TO SCALE**  
SHEET NO.  
**C13A**